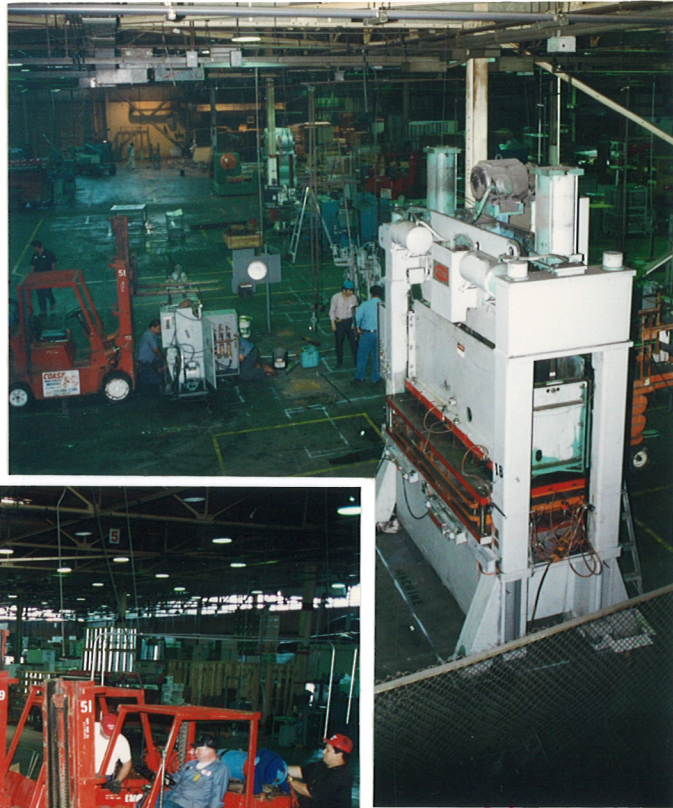
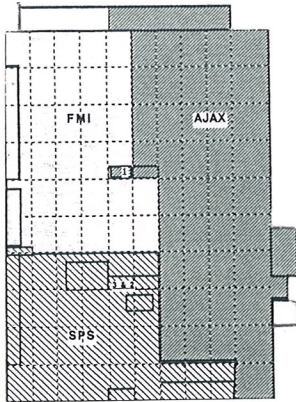


RIGGINS

CONSTRUCTION
& MANAGEMENT INC.



SPS TECHNOLOGIES

2701 Harbor Boulevard
Santa Ana, California

When the corporate office in Jenkintown, Pennsylvania of SPS Technologies decided to downsize their Santa Ana operations, they contracted with **RIGGINS CONSTRUCTION & MANAGEMENT INC.** to represent them as their *Construction Managers*. It was RC&M INC's responsibility to hire consultants, coordinate with authoritative agencies, and work with tenants in reconfiguring the interiors of their 315,000 SF facility.

Under **RC&M INC.** overview, the 77,893-SF area being leased by Fireplace Manufacturers, Inc. and the 136,561-SF area being leased by Ajax Boilers, Inc. were separated by fencing and walls. New restrooms, testing laboratories, and a refractory facility were constructed; and various building and site modifications were made to conform with current codes, Title 24 requirements, as well as tenant needs.

Major manufacturing equipment including assembly lines, conveying systems, paint booths, welding equipment, hydraulic benders, lathes, and large presses as well as a test tower and water chiller unit were moved to new locations. After all electrical, air and gas lines were appropriately redistributed, the equipment including pancake scales and bridge cranes were calibrated and/or recertified.